

BRINGING WATER TO YOUR DOORSTEP

PATENTED SYSTEM.

EXPERIENCE.

COMMITMENT.





ABOUT US

ILURCO S.A is a leading Spanish manufacturer and supplier of steel water storage tanks.

JUAN UREÑA DE LA ROSA founded **ILURCO, S.A.** in the 80s, after several years of hard work in the research and development of irrigation water storage solutions. There was, back then, a demand for simple and versatile water solutions with an easy, quick and cost-effective installation.

After developing and patenting the **ILURCO** water tank system, demand grew rapidly across a wide range of applications in the potable water, wastewater, fire fighting industries, water purification systems, irrigation, etc...

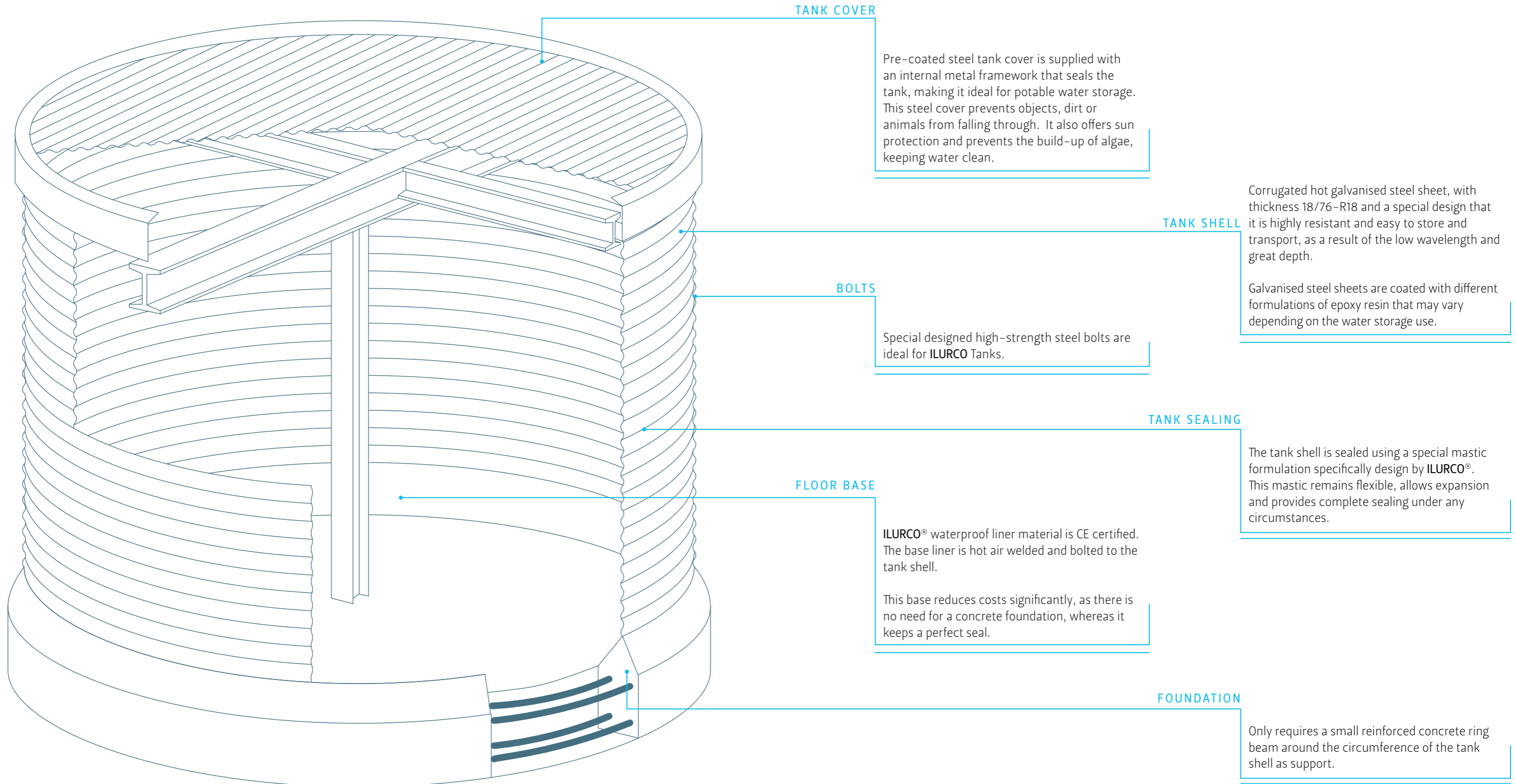
A new manufacturing plant was opened with the latest technology in 1998 for the transformation of steel. **ILURCO** has a net capacity to process 5,000 tonnes of steel a year to serve both national and international markets with the highest standards.

Today, **ILURCO S.A.** has manufacturing facilities in Granada, with an office dealing with business in Andalusia and overseas and is established in four continents, either with commercial representatives or branch offices, like **ILURCO PERU**.

The assembling and transporting easiness of **ILURCO** tanks components, makes of it a very exportable product, simple to install anywhere in the world, regardless how inaccessible or far it is.



HOW AN ILURCO TANK IS MADE?



ADVANTAGES OF PATENTED ILURCO® SYSTEM



ILURCO® patent system is the result of years of experience, research and development within the water storage industry.

Corrugated galvanised steel panels and the unique base of the ILURCO® tanks provide an economical, reliable and low maintenance solution for water storage.

ILURCO's broad expertise, particularly in the water tank industry, makes us the brand to trust in the design, manufacturing and installation of steel water storage tanks.

The advantages of corrugated steel panels for the tank shell are endless. Steel presents an excellent

tensile strength, it is elastic enough to allow the movement of fluids, ground settlements or thermal expansion, durable and low maintenance. If the steel panel is corrugated then the material is easy to store and transport and presents excellent wind stiffening properties.

But it is the tank base that makes the ILURCO® system really unique. This material is water-proof, presents an excellent elasticity to adapt to the ground, it is easy to clean, durable and cost-effective.

The perfect match sheets-liner floor base makes ILURCO® the right choice.

In general, ILURCO® system offers important advantages:

1 Lower costs and better sealing as the installation only requires a ring beam around the tank shell instead of a complete concrete foundation.

2 The excellent properties of the different materials are used to their fullest potential, optimising resources to save costs (i.e. only steel supports traction forces, unlike concrete).

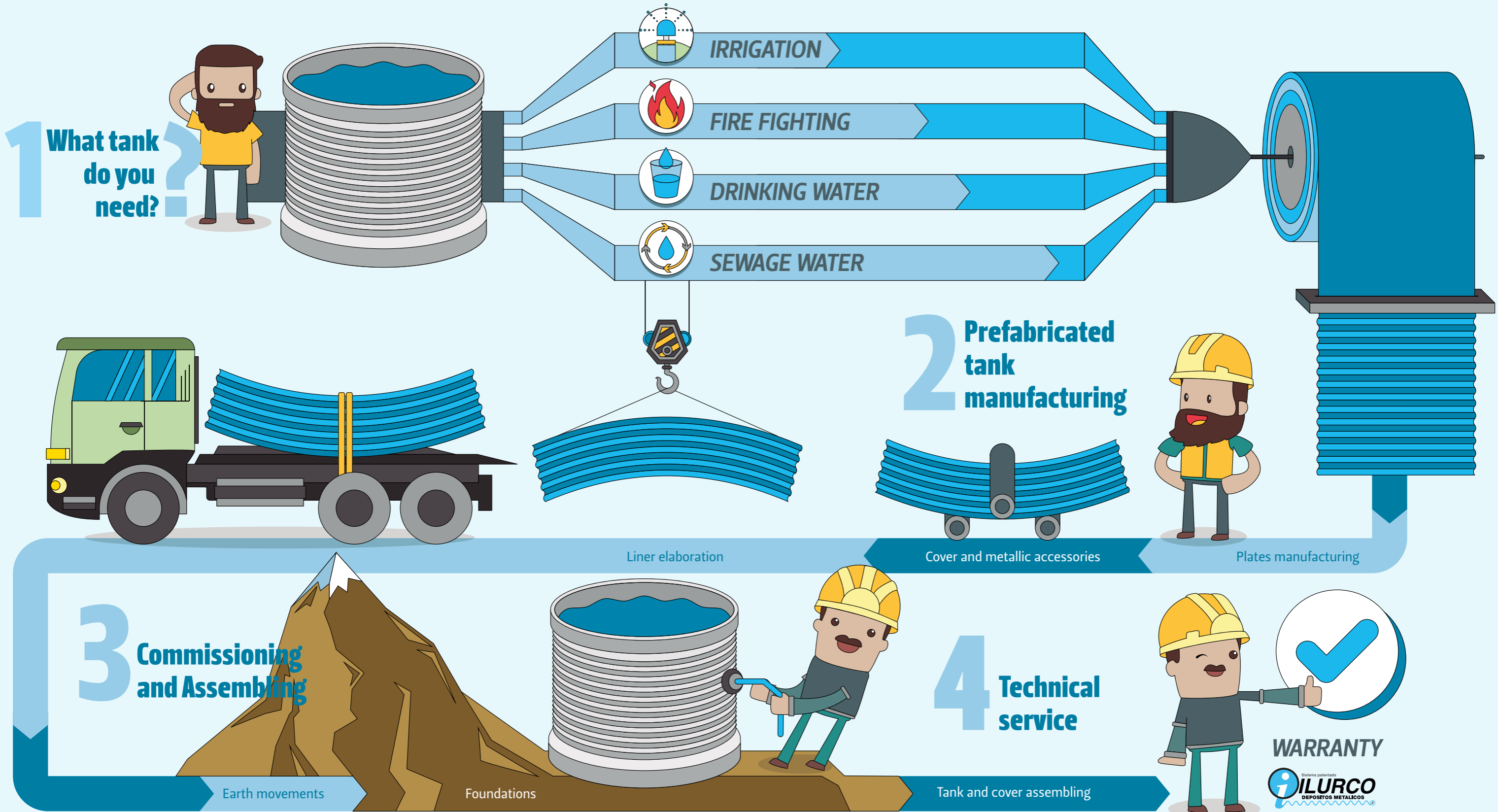
3 The outstanding flexibility of the base liner material makes it suitable for irregular ground surfaces.

4 This liner material only covers the tank base, other systems can cover the tank shell partially, making the tank more vulnerable to corrosion without an access to be repaired.

5 Interior coating can be adapted, depending on the tank final use: potable water, water treatment, etc.

6 All tanks are completely modular. This flexible system allows adjustment in tank capacity, makes it easy to transport and may be improved with endless possibilities using a lot of different accessories.

7 Cost effective and easy to build.



IRRIGATION

ILURCO® tanks are ideal for irrigation water storage offering the best value for their superb properties:

- ~ Durable
- ~ Minimum volume for extra storage capacity
- ~ Keep water clean
- ~ Endless possibilities to increase capacity and tank improvements
- ~ Cost effective



When storage tanks are installed in environmentally protected areas, such as National Parks, they can reduce environmental impact by applying a coat of **Verde Ilurtano®**, pine-olive green colour coat that will blend in the tank with the environment. Other colours such as white or desert sand can be offered as well when the tanks are installed in the mountains or dessert regions.



ILURCO® Tanks for irrigation water storage can be covered with a steel roof that protects water from sunlight and prevents dirt, animals or insects from falling through keeping water clean and in the best condition possible. This is crucial for drip irrigation systems where water needs to be at its best in order to avoid clogging. Covers also reduce the loss of water through evaporation and reduce the cost of maintenance because the tank, the water and all filters remain clean for longer. No wonder the use of tank covers is definitely cost effective.



The interior of this tanks delivers higher durability and low maintenance either when using the highest standards with galvanising or Duplex System coating using ILURPOXI Celeste.



INDUSTRIAL FIRE FIGHTING



ILURCO tanks for industrial fire fighting comply with CEPREVEN and ISO 23500 rigorous manufacturing and tests standards. Besides, we have designed a wide range of accessories and ancillaries manufactured under the highest standards, which are ideal to use with these and other ILURCO® tanks.

ILURCO® tanks are ideal for the water supply of aerial firefighting (fixed-wing aircraft and helicopters) and water-bombers, especially in remote areas, because their installation is really easy in such areas.

Please check the accessories section (p. 36) for a complete list of accessories available.



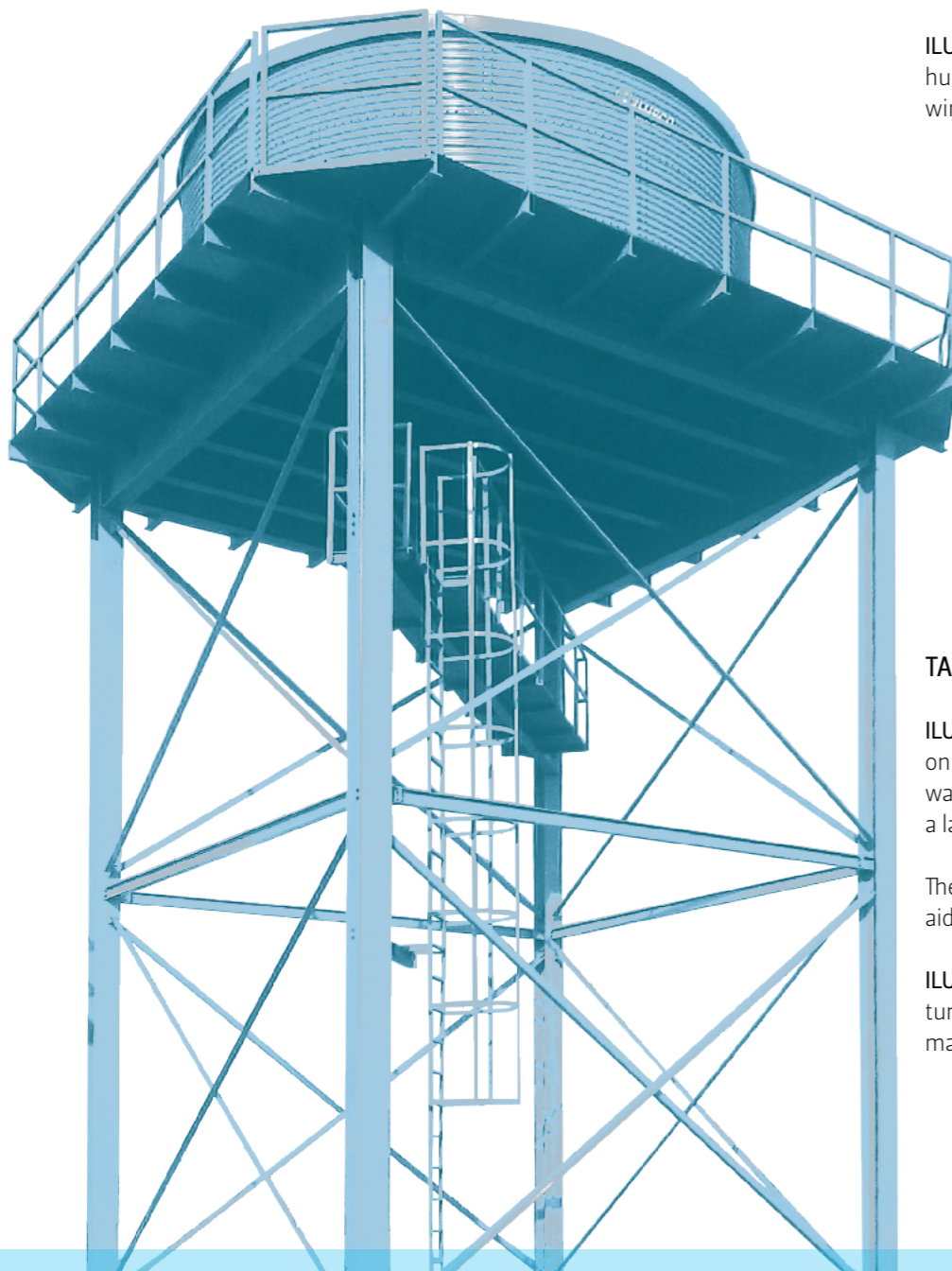
POTABLE WATER

QUALITY GUARANTEE

ILURCO® tanks for drinking water storage are manufactured to comply to potable water standards and regulations for the safe storing of drinking water.

Tanks are epoxy coated with ILURPROXI Blanco and have a base of virgin PVC resin that is a non-porous material that ensures hygiene and easy-cleaning.

ILURCO® tank venting system prevents animal or human intruders from entering the tank, as vent windows are not required.



TANK TOWER

ILURCO® tanks for potable water can be mounted on a steel tower when a constant pressure head of water is required for supply purposes and there is a lack of electricity supply or on uneven surfaces.

These tanks are also suitable as a halfway pumping aid solution in other installations when needed.

ILURCO provides a complete design and manufacture service for this sectional bolted tank towers, making them easy to transport and install.



ROOF REPAIR AND REPLACEMENT

ILURCO, offers a complete specialised roof tank replacement service. We are specialist in replacing damaged concrete tank roofs with ILURCO® steel cover system.

Concrete tank roofs can often get damage as a result of chlorine gas after chlorination is carried out. Chlorine gas is highly corrosive and may damage the roof trusses and collapse. When this occurs we replace the concrete roof with ILURCO® cover system, preventing corrosion and easy to repair, if required in the future, as ILURCO® cover system is completely sectional.

LOW MAINTENANCE

ILURCO tanks' for potable water are designed to be very low maintenance. All their components (PVC film and epoxy coated steel) are non-porous which prevents contamination so that they are easy to clean. Tanks are quick and easy to repair as they are completely sectional and they can be repaired by replacing just one or more parts and ensuring your installation remains in top condition.

WATER PURIFICATION SYSTEMS

ILURCO provides a complete solution to meet water supply project-specific demands. Their pre-fabricated and sectional water filtration systems are easy to install, low maintenance and low in energy consumption; they can also be powered by solar energy.

ILURCO offers complete water treatment and supply solutions for remote locations where drinking water supplies are not available.



SEWAGE WATER



FOOD INDUSTRY WASTEWATER.

ILURCO has a long tradition in the design, construction and installation of water storage tanks for wastewater and particularly for olive oil mills wastewater.

For the past years ILURCO has developed specific solutions for the storage of olive oil wastewater that can also be useful in the storage of other high density wastewaters

SPECIFIC ACCESSORIES.

For every problem, one solution. ILURCO has developed a large list of specific accessories for sewage water tanks. Inspection bridges, mixer brackets or inclined outlets for endless screws are some of them. Just tell us what you need, we have the solution.

360° SOLUTIONS.

The knowledge of ILURCO engineering department and its large experience in the market, enables us to develop 360° solutions in water purifying, mostly on remote villages where the low-cost prefabricated solutions are most accurate. Always with the ILURCO warranty.

RESEARCH AND DEVELOPMENT.

R+D is the base of all ILURCO products. Our effort to innovate and develop simple solutions for complicated problems materializes in our products. From 1.990, ILURCO is developing products in the field of water purifying to adapt the ILURCO tanks to any use included in that wide field. In the last years, we have incorporated prefabricated compact water purifiers, concerning the global solutions for a complete water cycle that ILURCO offers for small remote villages.

DECANTATION.

The ILURCO R+D department has developed our own solutions for muddy water decanting that works with outstanding efficiency. Running away for lineal designs that occupies a huge space and are not so efficient, over all with high flows. Our design is circular and based on versus-gravity water tracks that have demonstrated to be quite efficient. We can design your own custom solution, just ask.



STEEL PLATES: MANUFACTURE AND HANDLING

ILURCO® tanks are made of steel with outstanding mechanical properties to build the best storage tanks. Besides, our tanks benefit from our ISO 9001 and ISO 14001 certifications that ensure consistent quality and highest standards.

De-coiled steel is roll-formed using special machinery, which is able to produce corrugated steel sheets that surpass all industry parameters of official tolerances.

Once profiled, the steel sheets go through a detailed process of perforation curving and coating, resulting in the final corrugated steel panels.

Our automated painting line will coat the tank panels under strict control procedures and conform to comply with quality standards ISO 9001 and environmental management system 14001.



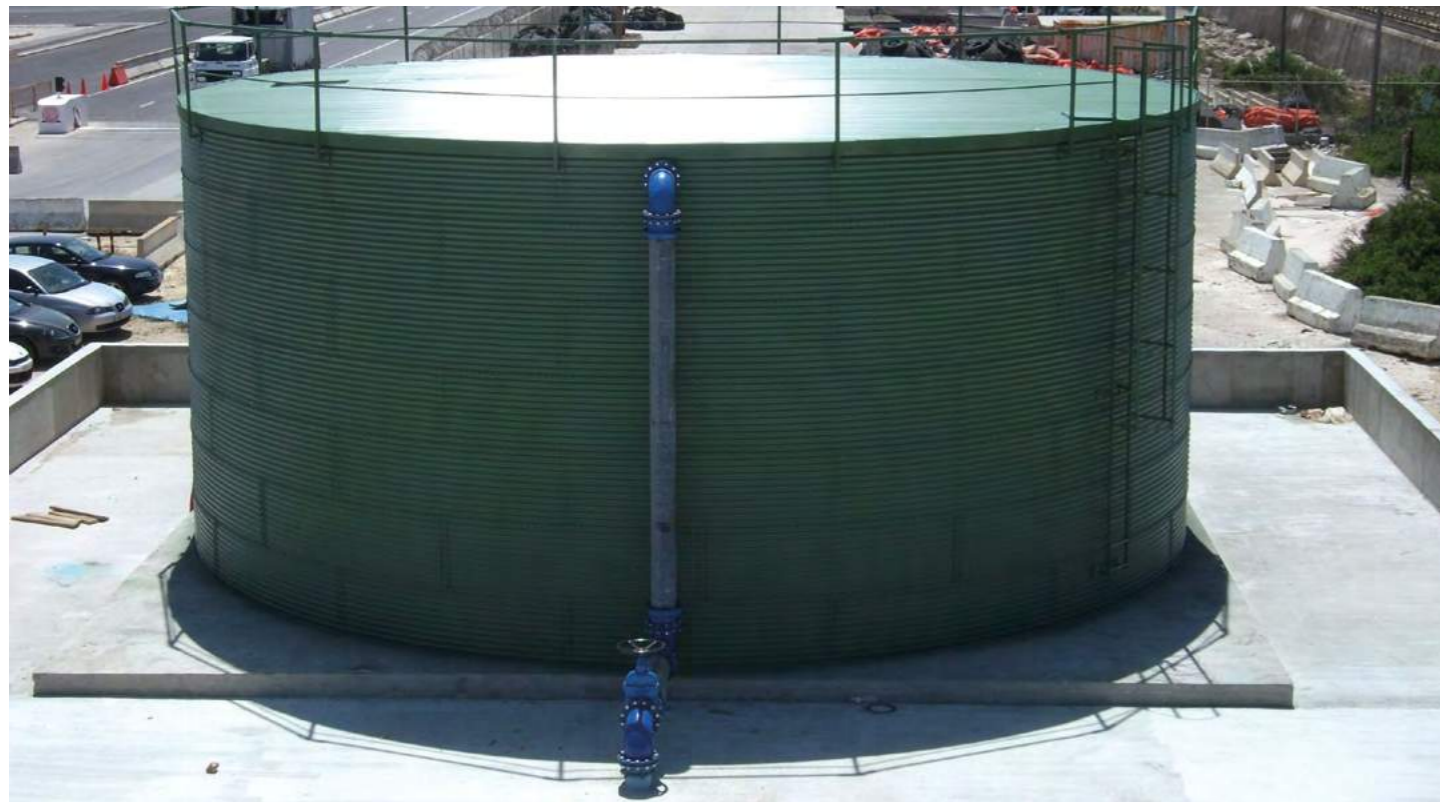
BASE: MANUFACTURING

The tank base is made out of a waterproof liner material manufactured by ILURCO® with CE marking.

This base liner is pre-shaped in our premises by controlled welding with a special machinery. In many of our projects, this base is manufactured in one unique piece which is ready-to-bolt. For larger tanks, where the base must be manufactured in different separated parts, it must be welded on-site, always observing ISO 9001 quality standards.



COVERS, ROOFS AND ACCESSORIES



ILURCO® steel tank roofs are fully sectional and easy to install onto water storage tanks, reducing manufacturing and installation costs. Our in-house welding facilities are responsible for the manufacturing of cover structures, as well as many other steel tank accessories such as bridges or platforms for water treatment tanks. We can provide with various accessories and ancillaries for new and existing storage tanks: ladders, platforms, handrails, outlets or valves. Our R&D department is in constant development of new solutions and bespoke products.



BOLTING AND OTHER MATERIALS



Bolting and sealant materials, as well as other tank parts, are manufactured by ILURCO under strict quality conditions for ILURCO® tanks following ISO 9001 and ISO 14001 standards. Tank parts and accessories manufactured by accredited third parties are carefully tested to comply with quality standards.



COATINGS

COATINGS APPLICATION SYSTEMS

For a better corrosion protection, ILURCO® offers outstanding coating solutions to meet any project-specific demands.

ILURCO® TANK COATINGS

PRODUCT	DESCRIPTION	USE
ILURPOXI BASICO	Epoxy coating with outstanding adhesion properties on all type of surfaces. To use as priming coat to de subsequent coats or as topcoat for non-corrosive water storage.	Fresh water, Irrigation water
ILURPOXI CELESTE	Protection epoxy coating for water, wastewater or corrosive water storage. Ensures high galvanising durability.	Fresh water, Seawater, Wastewater, Irrigation water
ILURPOXI BLANCO	Provides a highly resistant epoxy coating and ideal for food storage. Suitable for potable water storage.	Potable water, Fire water storage, Corrosive water
ILURPETROL	Extra thick epoxy coating that offers the most resistant coating possible for petrochemical and oily water storage. Perfect to be used in sewage water tanks.	Water treatment, Seawater, Sewage and industrial wastewater, brine or olive oil mill wastewater
ILURTANO VERDE	Green polyurethane coating for a perfect external finish. Dual function as tank protection coating and decoration. Its pine-olive green colour makes tanks look good and blends them with the environment.	Decoration, Erosion protection
HIGH PERFORMANCE	Sometimes it is necessary to use specific coatings for specific situations. Our Engineering department has approved some high-performance coatings to be used on that cases.	Highly corrosive water, Physical abrasion conditions, Industrial wastewater storage

SINGLE SYSTEM (HOT DIP GALVANIZING Z-275)

ILURCO® tank panels will be hot dip galvanized to the following European standards (UNE): UNE – 10346:2015, UNE EN 10143:2007.

Minimum protection for ILURCO® tank panels is Z275 that results in a minimum 275g/m2 galvanizing weight and a zinc thickness of 38.5 µm.



DUPLEX SYSTEM (GALVANIZING + EXPOXY):

Different studies carried out by independent institutions reveal that the duplex system is the ideal corrosion protection treatment for steel.

The duplex system provides stronger protection to steel than the ones where the components are used separately (i.e. galvanized steel and coated non-galvanized steel). This is due to the porosity of paint that allows water to reach the steel. So, when steel is not galvanized, the moisture in contact with the steel surface forms iron oxide. This rust increases in volume cracking the coating and accelerating the corrosion process.

On the other hand, if the steel panels are only galvanized, zinc is exposed directly to corrosives, so zinc oxide appears reducing the coating protection easily.

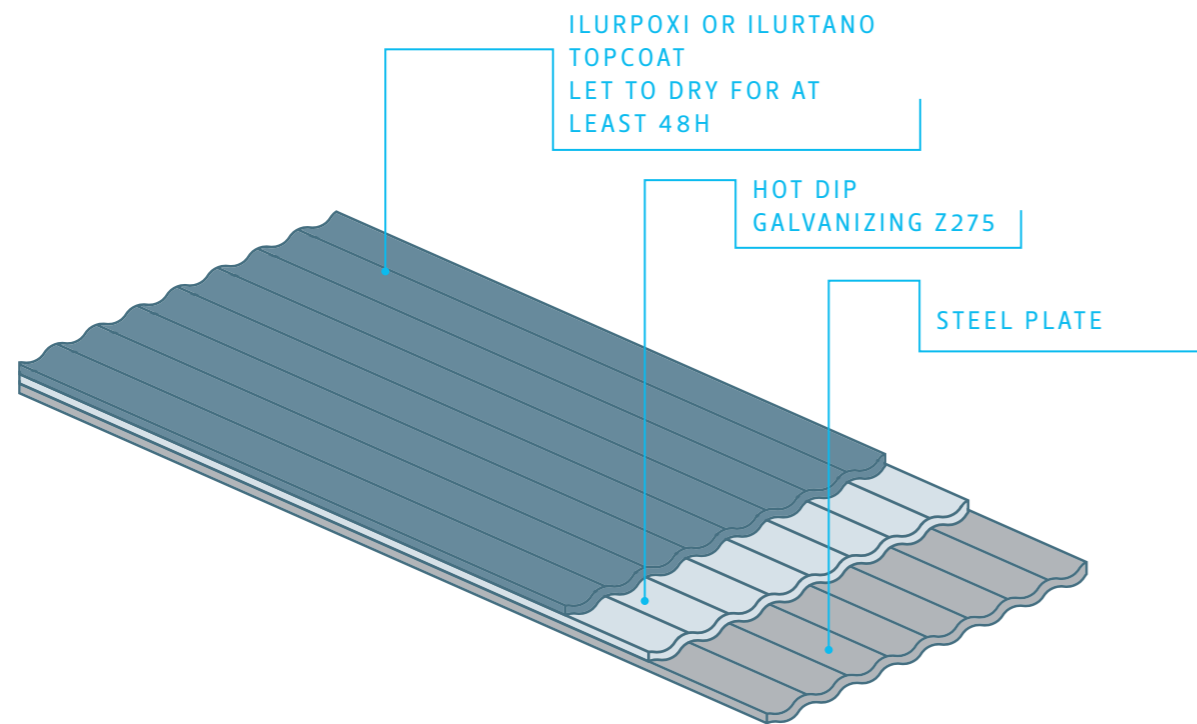
Apart from that, the PVC liner in our tanks covers just the floor, not the walls, so, we can never have zinc oxide problems because of moisture trapped between the liner and de galvanized steel.

DUPLEX SYSTEM

Same on both sides

Our R&D department has developed various epoxy and polyurethane coatings to meet specific requirements depending on use. Some of the most impressive performance requirements of the **ILURCO** coatings includes: a high adhesion to galvanised surfaces that it is second to none and an outstanding elasticity, which is higher than regular coating international standards. These properties make of **ILURCO** coating the ideal choice for a broad number of uses under extreme conditions, protecting surfaces from micro-cracking and the damage responsible for corrosion.

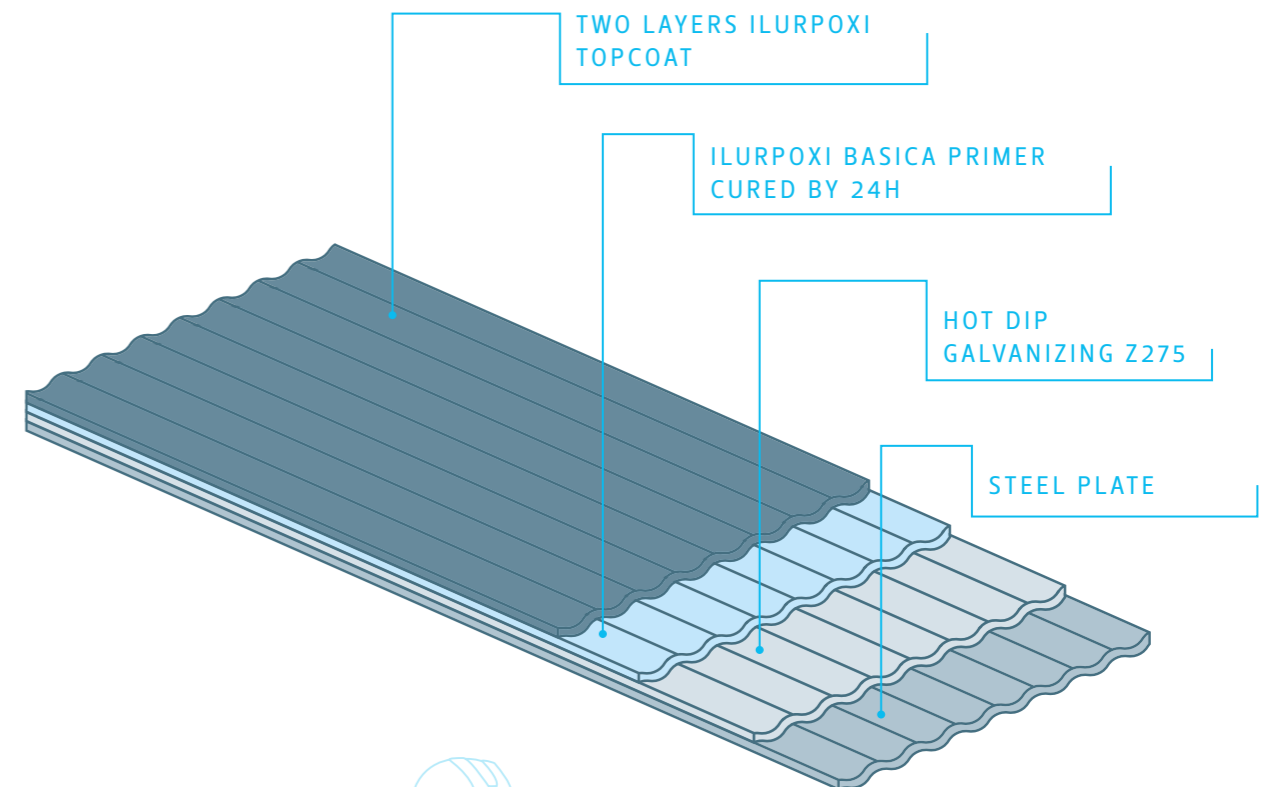
This coating meets ISO 12944-5 requirements, as well as quality and environmental standards ISO 9001 and ISO 14001.



TRIPLEX SYSTEM

Inner side

It consists in applying the same duplex system but letting the first layer curing for 24h and applying a second topcoat in one or two layers, depending on the water to be contained by the tank.

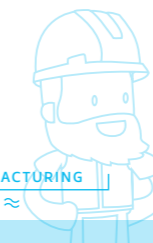
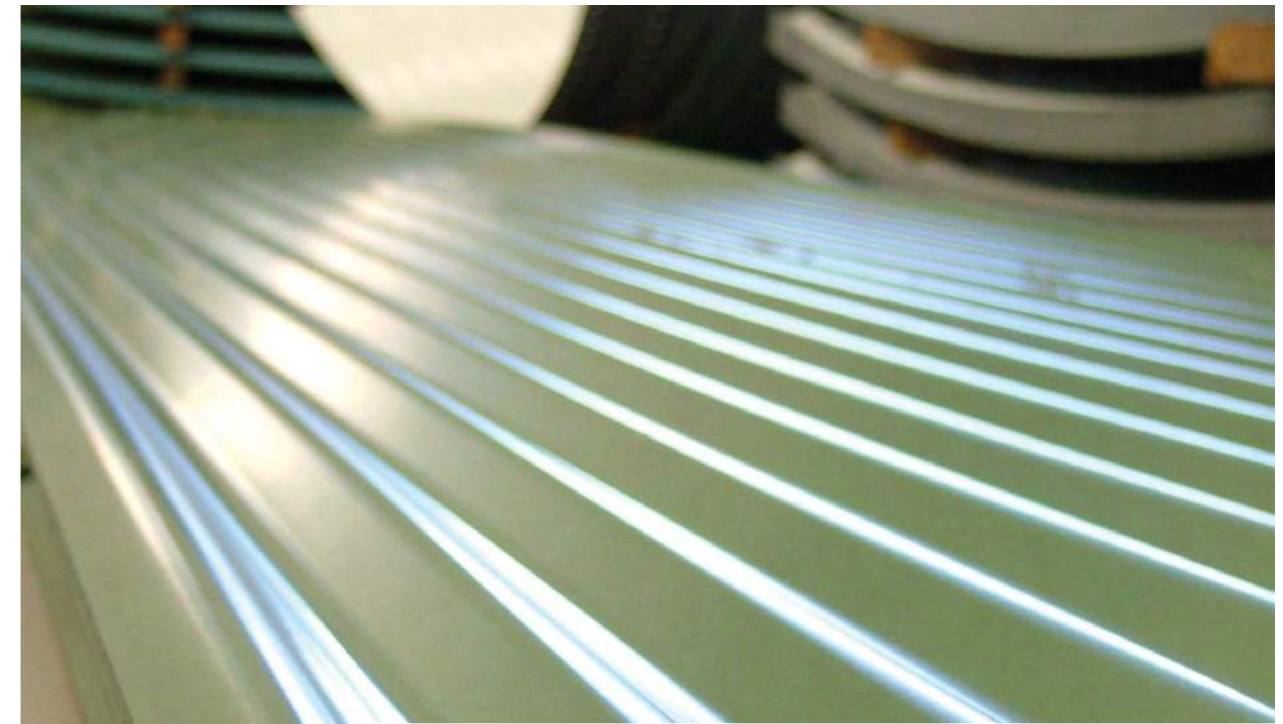


RECOMMENDED COATINGS DEPENDING ON THE USE OF THE TANK AND WORKING CONDITIONS

STORAGE TANK MAY CONTAIN

TANK COATING	Fesh water. Neutral	Dirty, hard water or with carbonates	Wastewater. Industrial water treatment	Foof Industry wastewater	Corrosive water. Acidic	Potable water	Petrochemical or oil water	Seawater
GALVANISING	✓	○	✗	✗	✗	✗	○	✗
ILURPOXI® BÁSICO	✓	○	✗	✗	✗	✗	✗	○
ILURPOXI® CELESTE	✓	✓	○	✓	○	✗	○	✓
ILURPOXI® POTABLE	✓	✓	○	✓	○	✓	○	✓
ILURPETROL®	✓	✓	✓	✓	✓	✗	▲	✓
HIGH PERFORMANCE	✓	✓	▲	▲	▲	▲	✓	▲
PVC BASE	✓	✓	✓	✓	✓	✓	✗	✓

✗ Not Suitable ○ Mild Exposure ✓ Moderate Conditions ▲ Severe Conditions



COMMISSIONING AND ASSEMBLING

The installation and erection of ILURCO® tanks is fast and cost-effective. The installation of these tanks can be completed in no time and there is no need for major works, which result in important costs savings.

GROUNDWORKS:

Groundworks are required for the leveling and correct treatment of the soil in order to make it suitable for the installation of storage tanks. This stage also includes the excavation of a trench for the ring-beam and the outlet pipes, as well as the steel roof anchor panels if necessary.

FOUNDATION:

Foundation of ILURCO® tanks requires the construction of a small reinforced concrete ring-beam around the tank shell. The construction of this ring-beam is very quick and serves as support for the wall panels, so there is no need to reinforce it with a concrete slab on the base surface. The dimensions of the ring beam are 40x40 cm. with a corrugated bar structure.

TANK ERECTION:

Tank erection is really quick, as works on-site are minimal. Sectional tank parts only require to be site bolted, reducing installation costs significantly.

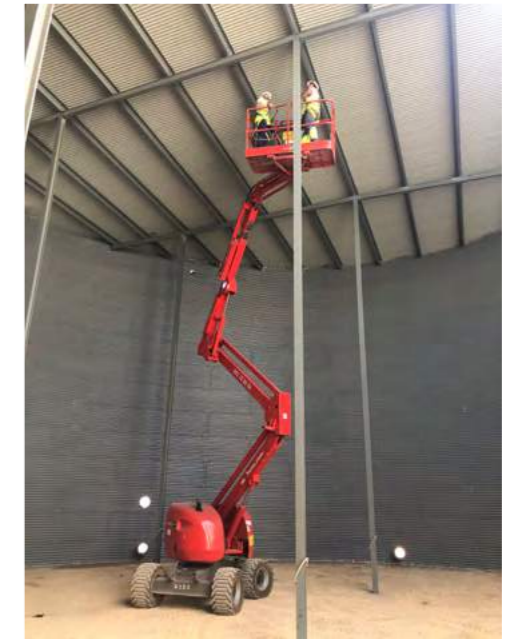
Once the ring beam is finished the tank panels are attached to the beam and so are the following panels, which are bolted until complete size is reached. At this point an optional cover may be installed if required, and the base liner is hot air welded and bolted to the tank shell.

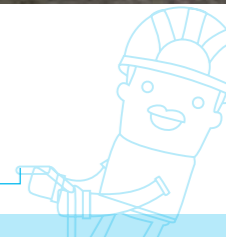
When erection is completed the paint cover on the outside of the tank is double checked in order to repair any scratch that may have appeared after installation.

ROOF AND COVER INSTALLATION:

When the roof is in place, the supporting pillars are welded to the panels. Then, beams and purlins are attached to the tank shell with specially designed pieces, so there is not extra stress transmission to the tank cover.

To complete with the tank installation, roof panels, manway and vent caps are installed to prevent any matter falling into and contaminating the water but allowing the tank venting.





AFTER-SALES SERVICE

ILURTEC is the after-sales division subsidiary. Their archives store details and specifications of every single tank manufactured by ILURCO from the very first one. This information is crucial when a tank needs to be serviced or repaired and very specific spare parts are required.

Additionally, ILURTEC provides comprehensive maintenance and repair services on all tank products through an extended guarantee or on a pay as you go basis. Technical services include:

UPGRADE AND REFURBISHMENT:

Tank size alterations (a complete study needs to be carried out prior to alterations), cover and roof installation, new use, tank relocation, among others.

TANK PARTS REPLACEMENT:

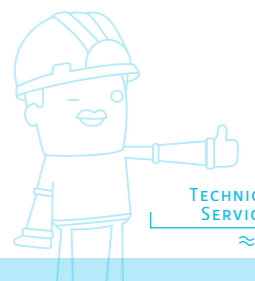
As sectional bolted tanks, almost any tank part may be replaced when damaged with no need for major repair works.

TANK COATING AND LINING SERVICE :

Keeping coating in good condition is crucial and extends the working life of existing storage tanks. Time duration for these works depends on the damage and the tank use. ILURCO uses its own sandblasting and painting equipment to carry out the maintenance works of tanks and offering very competitive prices, together with the best guarantee of a company with such an extensive experience in the use of innovative coatings which have been exclusively designed to be used with ILURCO tanks.

MAINTENANCE CONTRACTS AND EXTENDED GUARANTEE:

Would you like an absolute peace of mind? ILURCO can offer the best service, repairs and maintenance contracts to suit your needs and budget. We have a wide range of services to suit client and facility management requirements. Bespoke packages are provided to clients with unique requirements.



ACCESSORIES

ACCESSORY	DESCRIPTION	SIZES RANGE	USE
STEEL COVER	Heavy duty steel roof with manway. Includes specially designed pieces on top of a solid metallic structure. It keeps water clean, excludes daylight, can withstand snow loads and prevents any matter falling into and contaminating the water.	No limit in diameter (90 metres nowadays)	Potable, Firefighting, Drip Irrigation
RAFFIA COVER	This raffia cover is to be used with a central pole support and blocks out 80% of sunlight. It is very cost effective solution for irrigating water tanks.	Maximum diameter: 16 metres	Irrigation
DRAIN OUTLET	For tank drainage. The outlet comes in different materials: iron or PVC, including metallic drain plug.	Steel up to $\varnothing 2''$ PVC $\varnothing 90 - \varnothing 315$ mm Other diameters, please ask.	All types
DEAD WATER PIPE	Pipe to be connected to the outlet so dead water is allowed between the floor of the tank and the bottom of the suction arrangement, letting solids decant.	$\varnothing 1'' - \varnothing 12''$ Height: 15-20 cm	Irrigation Sewage water
NOZZLE	Flanged or threaded connector, to implement the attachment of other items such as pipes.	$\varnothing 1'' - \varnothing 12''$	All Types
OVERFLOW PIPE	Flanged or threaded connector. Available in a basic option, also with a specially designed pipe or connected to a drain by an internal pipe.	$\varnothing 1'' - \varnothing 12''$	All Types
ANTI-VORTEX SUCTION PLATE	Anti-vortex plate with knuckle bend and external flange.	$\varnothing 1'' - \varnothing 18''$	Firefighting
MANHOLE	Access panel with flange and cover.	$\varnothing 20''$	Sewage Water Firefighting
REMOVABLE PLATE	Removable Plate (800mm. high from the floor) for an easy access to the tank. Included in all our ILURCO Tanks.	3.100 x 880 mm	All Types
VALVES	Valves available: flanged, threaded, ball or butterfly valves. Highest quality valves, suitable for any type of pipe or tank outlet.	$\varnothing 1'' - \varnothing 12''$	All Types

ACCESSORY	DESCRIPTION	SIZES RANGE	USE
FLOAT VALVE	Threaded or flanged connector. High quality valves to be installed on the tank infill pipe, to secure inlet of water to the tank when full capacity is reached. Mechanical valves are available as well as valves with electric meter.	$\varnothing 1'' - \varnothing 12''$	All Types
ILURCO MANOMETER (TANK GAUGE)	Depth meter designed by ILURCO. To be fixed on the base of the tank.	From 0 a 10 meters of water column	Drip Irrigation Potable Water Firefighting
ELECTRONIC WATER LEVEL CONTROLLER	To monitor the level of water in the storage tank. Level sensing is achieved via a single pressure sensor installed on the base of the tank. A precise level sensing probe detects the exact height of water present in the tank. The probe is connected to a digital control panel (220v) that shows either the depth or volume of water in the tank. The controller then uses two programmable relays (max./min.) which can be connected to pumps, solenoids, or any other type of filling or draining device to maintain the level between defined limits. This controller can also be connected to a computer or any other electronic device for a better monitoring. Sensing probe delivers accuracy down to a few centimetres.	From 0 a 10 meters of water column	Drip Irrigation Potable Water Firefighting
OVERFLOW GUTTER	Galvanised steel perimeter overflow gutters.	On demand	Sewage water Decanting Water purifying
LADDERS	Hot dip galvanised ladder. To be installed inside the tank. A gated ladder can be fitted to the exterior to ILURCO tanks that have a cover and handrail.	All tank heights	All Types
WALKWAY PLATFORM	Platform or bridge to access the tank. It may be used as bracket for mixing and de-airing systems.	Any size or design on demand	Sewage water Potable water
PUMP ANCHORS	Submerged pumps, mixers, blowers or anything to be inside the tank may have its own designed anchor.	On demand	Sewage water Potable Water Irrigation

OTHER PRODUCTS

~ CORRUGATED STEEL PIPE:

Corrugated Steel pipes are ideal for stormwater systems and underground waterways. Half pipe tubes are also available for overground culverts.

~ STEEL BUILDINGS:

Agricultural buildings made from steel with no interior support system are simple to install and cost effective.

~ TUBE WELLS:

Wells can be installed using corrugated steel pipe.

~ ALGILURCO:

Liquid algae killer used to kill, remove and prevent algae in your storage tank. Environmentally friendly and well-tolerated by plants and animals.

~ ILURTEJA:

Roof tile-shaped plates, with a subtle soft roll design. This classic look roof tiles are ideal for new constructions or roof restorations.

~ COVER PANELS:

Either galvanised or coated cover steel panels. Available in a wide range of colours and thicknesses.

CORPORATE SOCIAL RESPONSIBILITY

For **ILURCO**, Corporate Social Responsibility is such an important matter. For that reason we do different actions on that line, such as sponsoring solidary sport events or supporting underprivileged populations in the regions where we sell our products, like Africa or South America.





QUALITY & ENVIRONMENT

We always understand Quality as the crucial management tool to drive the planning and developing of our main activities to fully meet customer expectations. We strive to comply with environmental and sustainability legal requirements and specifications in the manufacturing and installation of our products.

Thus, since 2000, **ILURCO, S.A.** is EN ISO 9001 certified in Quality Management.

Environmental management system of **ILURCO** is EN ISO 14001 certified as a commitment to environment and future generations, as well as a more efficient use of raw materials, recycling, reducing waste and improving energy efficiency in order to lower operating costs.

REGULATIONS

ILURCO Tanks comply with a long list of regulations, some of which are included in the table below:

SUBJECT	REGULATIONS
STEEL PANELS	Technical Building Code (CTE), EN 10346: 2015, EN 10143: 2007
BOLTING	DIN 267 / EN ISO 898-1:2015
COATINGS	EN ISO 12944-5:2018
PVC FILM	DIN 4.062, 53616: 2011, EN 13956: 2013
POTABLE WATER	Royal Decree 140/2.003, Royal Decree 902/2018, Royal Decree 640/2006
FIRE FIGHTING	CEPREVEN, 23500:2018
ENVIROMENT	ISO 14001, Decree 47/2014, Royal Decree 1436/2010, Directiva 2008/112/ce, Regulation 22/2011, Directive (UE) n° 1305/2013, Norm MAM/304/2002, Decree 283/1995, Decree 47/2014, Royal Decree 513/2017, Royal Decree 117/2003, Royal Decree 212/2002, Royal Decree 656/2017, Orden de 12 de julio de 2.002, Decree 281/2002



CAPACITY LIST

CAPACITIES m³		HEIGHTS (mts.)												
Model	Diameter	1,67	2,51	3,35	4,18	5,01	5,86	6,68	7,52	8,35	9,19	10,02	10,86	11,70
3	2,83	11	16	21	26	32	37	42	47	53	58	63	68	74
4	3,78	19	28	38	47	56	66	75	84	94	103	112	122	131
5	4,71	29	44	58	73	87	102	116	131	145	160	175	189	204
6	5,66	42	63	84	105	126	147	168	189	210	231	252	273	294
8	7,55	75	112	150	187	224	262	299	337	374	411	449	486	524
10	9,434	117	175	234	292	350	410	467	526	584	642	700	759	
12	11,321	168	253	337	421	504	590	672	757	841	925	1.009	1.093	
14	13,208	229	344	459	573	686	803	915	1.030	1.144	1.259	1.373		
16	15,095	299	449	600	748	897	1.049	1.195	1.346	1.494	1.645	1.793		
17	16,039	337	507	677	845	1.012	1.184	1.350	1.519	1.687	1.857	2.024		
18	16,982	378	569	759	947	1.135	1.327	1.513	1.703	1.891	2.082			
19	17,926	421	633	845	1.055	1.264	1.479	1.686	1.898	2.107	2.319			
20	18,869	467	702	937	1.169	1.401	1.639	1.868	2.103	2.335	2.570			
22	20,756	565	849	1.134	1.414	1.695	1.983	2.260	2.544	2.825				
23	21,7	618	928	1.239	1.546	1.853	2.167	2.471	2.781	3.088				
24	22,643	672	1.011	1.349	1.683	2.017	2.360	2.690	3.028	3.362				
26	24,53	789	1.186	1.583	1.975	2.368	2.769	3.157	3.554					
28	26,417	915	1.376	1.836	2.291	2.746	3.212	3.661	4.122					
30	28,304	1.051	1.579	2.108	2.630	3.152	3.687	4.203	4.732					
32	30,191	1.196	1.797	2.398	2.992	3.587	4.195	4.782						
34	32,077	1.350	2.028	2.707	3.378	4.049	4.736	5.398						
36	33,965	1.513	2.274	3.035	3.787	4.539	5.309	6.052						
38	35,852	1.686	2.534	3.382	4.220	5.058	5.916							
40	37,739	1.868	2.808	3.747	4.676	5.604	6.555							
42	39,629	2.060	3.096	4.132	5.156	6.180	7.228							
44	41,513	2.260	3.397	4.534	5.658	6.781								
46	43,4	2.471	3.713	4.956	6.184	7.412								
48	45,286	2.690	4.043	5.396	6.733	8.070								
50	47,173	2.919	4.387	5.855	7.306									
52	49,06	3.157	4.745	6.333	7.902									
54	50,947	3.404	5.117	6.829	8.521									
56	52,834	3.661	5.503	7.345	9.164									
58	54,721	3.927	5.903	7.879	9.830									
60	56,608	4.203	6.317	8.431	10.520									
62	58,495	4.488	6.745	9.003										
64	60,382	4.782	7.188	9.593										
66	62,269	5.086	7.644	10.202										
68	64,156	5.399	8.114	10.830										
70	66,043	5.721	8.598	11.476										
72	67,95	6.056	9.102											
74	69,84	6.398	9.616											
76	71,73	6.749	10.143											
78	73,62	7.109	10.685											
80	75,5	7.477	11.237											
82	77,39	7.856	11.807											
84	79,28	8.244	12.390											

CAPAC. M3		HEIGHT (M)	
Mod.	Diam	1,67	2,51
86	81,17	8.641	12.987
88	83,05	9.047	13.598
90	84,94	9.463	14.223
92	86,83	9.889	14.862
94	88,72	10.323	15.516
96	90,60	10.767	16.183

- Special Heights (for reduced space available)
- Recommended to be covered (Drinking water, drip irrigation, industry)
- Recommended for irrigation (Best capacity/price ratio)



FACTORY

Polígono Los Álamos fase 2, nº23
18230 Atarfe | Granada | Spain
Tel +34 958 437 500
Fax +34 958 437 412
ilurco.com | ilurco@ilurco.com

SPAIN

comercial@ilurco.com

BRANCH OFFICES

PORTUGAL

portugal@ilurco.com

SOUTH AMERICA

peru@ilurco.com

OTHER REGIONS

export@ilurco.com

